

# Hello World e4 Application – Part 1

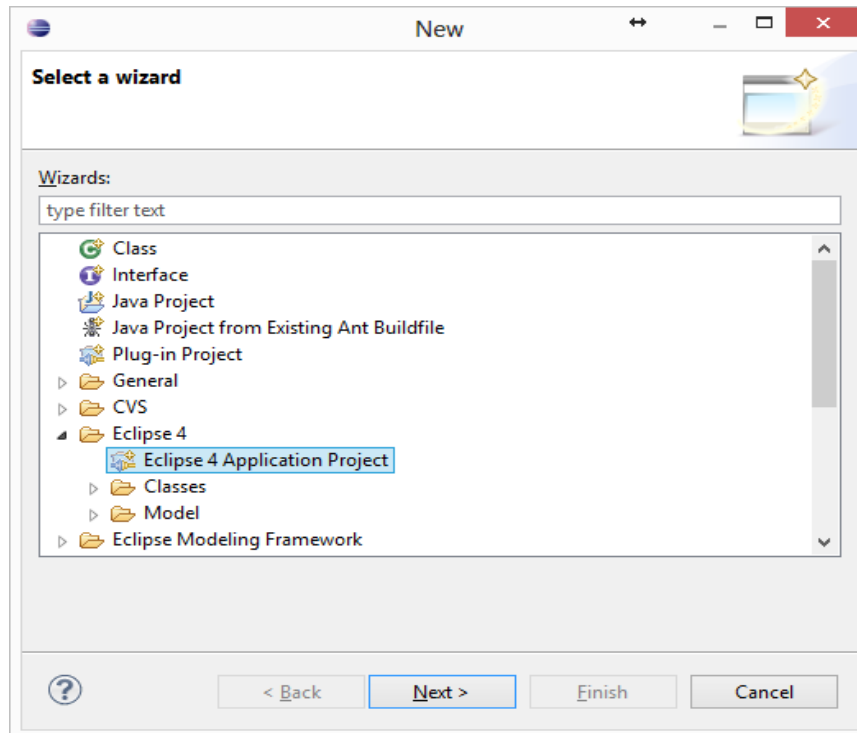
## Running the Application with a Window

### E4 Installation

1. Download Kepler SR2 – Eclipse Modeling Tools : [Click Here](#) to Download
2. Install E4 SDK on the downloaded Eclipse using p2 updatesite : [Click Here](#)
  - Install CSS Spy for Eclipse 4 and Eclipse 4 Core Tools

### Creating an Eclipse4 Plugin Project

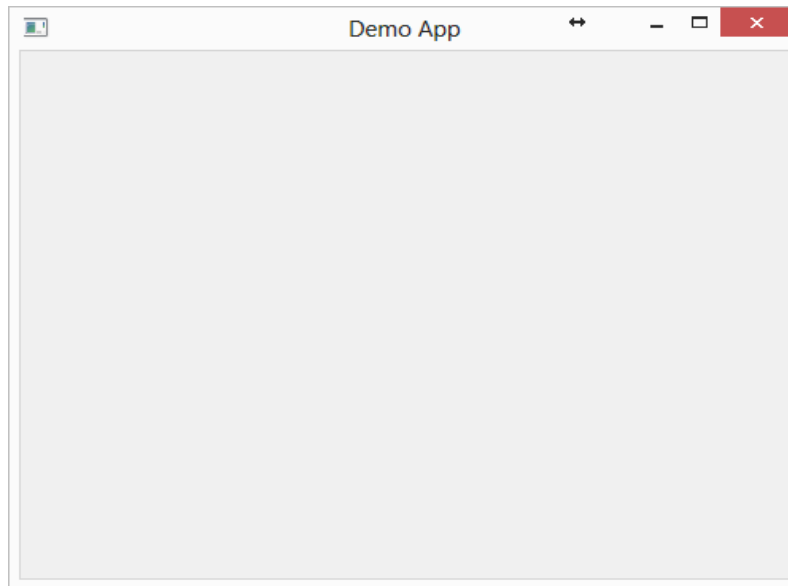
1. File > New > Others > Should now show a new category called as Eclipse 4.
2. Create a Eclipse 4 Application Project



3. Provide Project Name & do not modify rest of the Wizard Pages.
4. This will create the relevant Eclipse 4 Project structure with various files like src, css, .product, application.e4xmi etc.
5. Open E4 Application Model File : application.e4xmi
  - a. Select Windows, Expand it to select Trimmed Window.
  - b. Set the Label of Trimmed Window as Demo App.

### Running the Demo Application

1. Open the .product file and run the application from the product file
2. You should get an output as shown below



### Modifying the Application Window

1. Open E4 Application Model File : application.e4xmi
  - Select Windows and Expand it to select Trimmed Window.
  - Set Bounds (x,y,w,h) : 50,50,100,400

Run the modified application.e4xmi and you would see the modified output as below



This tutorial talks about creation of your Application Windows in e4. This can be compared to ApplicationWorkbenchWindowAdvisor customization in Eclipse 3 RCP.